

亞洲陶瓷
ASIA CERAMICS

GENERAL CATALOGUE



亞洲陶瓷
ASIA CERAMICS

info@asiaceramicplc.com
www.asiaceramicplc.cn
No.19, 3rd Jihua Road Foshan, Guangdong, China
P.C:528000 Hotline: 400 633 8868
TEL:+86-757-8201 9271 Fax:+86-757-82019015

ASIA CERAMICS HOLDINGS PLC is established through the strong merger of Better Group (Holding) Co., Ltd (Hong Kong), Louis Valentino Investment and Development CO., LTD (UK) and HCC Building Material Co., Ltd. Dedicated to new environmentally-friendly technology, it has become an internationally famous enterprise, with top inventing, producing and selling skills in building material and ceramic markets. Its famous products include various building and ornamental ceramic materials such as polished porcelain tile, luxurious rustic tile, sanitary wares, etc. Since 1999, when the company founded the first factory in Guangdong, China, ASIA CERAMICS HOLDINGS PLC has set up many large and modern production bases in Guangdong, Fujian, Xiamen, Shandong and Inner Mongolia. The company has developed several brands such as Louis Valentino Porcellanato, HCC, and Bally. Louis Valentino Porcellanato is famous for polished porcelain tile, glazed porcelain tiles, ceramic wall tile, artificial stone, wood flooring and natural stone. HCC specializes in glazed rustic tile and Bally manufactures sanitary ware. With advanced technology and management system, the company has passed "ISO9002 International Quality System Attestation" and "ISO4000 Environment Manage Systematic Attestation". The enterprise's comprehensive power has topped the whole industry.

Quality is life of an enterprise. ASIA CERAMICS HOLDINGS PLC has implemented advanced international management model. From raw material selection, warehouse entry to product circulation, standard in each part is higher than "National GB/T4100-2006 and International Internal Controlling Standard of Enterprise". All the products have passed "China Compulsory Certification" and reached "National Standard GB/T6566-2001 in Limit of Radionuclide in Building Materials – Part A". The environmentally-friendly, healthy and practical building products have won high social recognition, without any limit in production, sales and consumption.

ASIA CERAMICS HOLDINGS PLC has always had good reputation for its product originality and pattern novelty. Our ceramic engineering and technological research center has sophisticated equipment and mature facilities. Our product designs originated from Italy, the world cultural and artistic country and the top production base of building and ceramic art over millenniums, and integrating resources from east and west, we commit ourselves to healthy and harmonious products, which is also the core of our enterprise culture. We focus on technology, precision, integrity and quality in management, improving our product quality so as to perfectly combine the excellent traditional culture and modern domestic life. We are responsive to clients' needs; providing professional products, perfect consumption experience and trouble-free service for consumers globally. Healthy and harmonious domestic life is in your hands.

ASIA CERAMICS HOLDINGS PLC is always challenged to be at the top in world building and ceramic fields. We will employ traditional art to create peaceful and beautiful domestic space for you. Always progressing, we will lead you to experience marvelous and quality life!



COLLECTION

POLISHED PORCELAIN TILE

- 1 MARBLE
- 9 SANDSTONE
- 12 PURE COLOR
- 17 SNOW WHITE
- 19 CREMA MARFIL
- 21 TRAVERTINO
- 23 CAPRI
- 25 GAIA
- 29 NYX
- 33 THALASSA
- 36 CHRONOS
- 41 HERA
- 45 PINTO

- 47 NEREID
- 49 SOLARIS

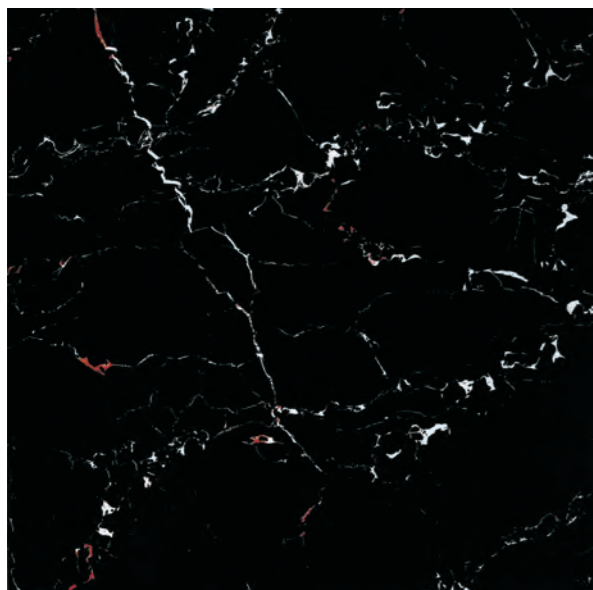
GLAZED PORCELAIN TILE

- 55 SANDSTONE
- 58 CEMENT
- 60 PATTERN

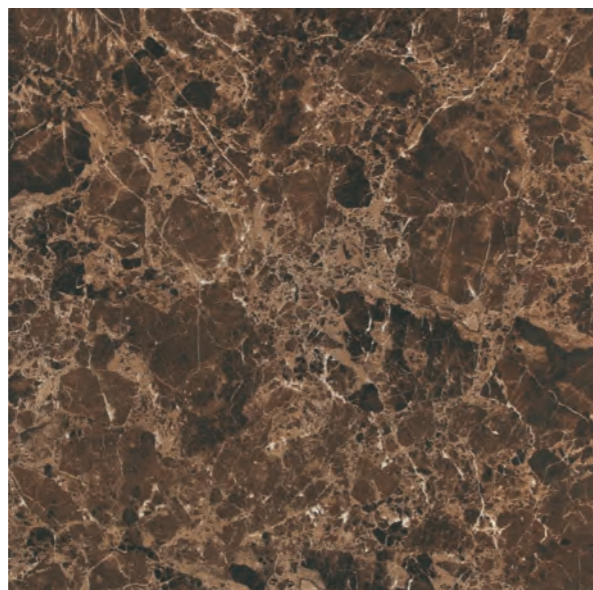
CERAMIC TILE

- 61 MERCURY
- 65 CLASSIC
- 67 WALL TILE
- 71 WHITH TILE
- 73 DECORATION

MARBLE



MARBLE TILE
MY8P146-G 60x60 80x80



MARBLE TILE
GP60NE 60x60 80x80



MARBLE TILE
MY8P221-D 60x60 80x80



MARBLE TILE
MY8P152-G 60x60 80x80



MARBLE TILE
MY8P046 60x60 80x80



MARBLE TILE
MY8P041 60x60 80x80

MARBLE



MARBLE TILE
MY8P363-3 60x60 80x80



MARBLE TILE
MY8P361-1 60x60 80x80



MARBLE TILE
MY8P364-3 60x60 80x80

MARBLE

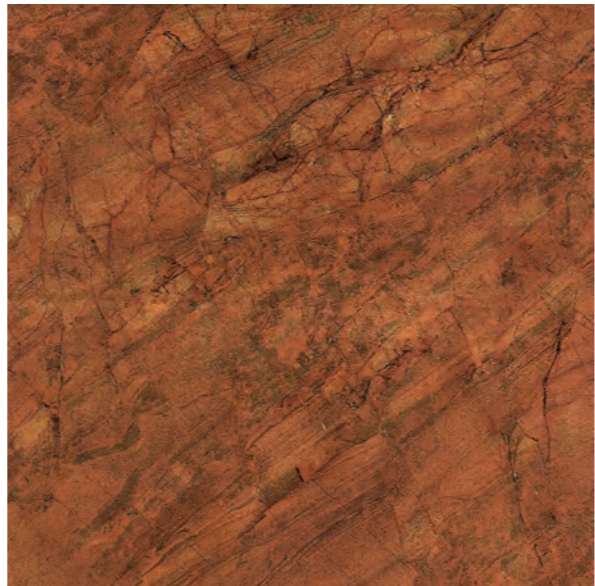
5



MARBLE TILE
MY8P013 60x60 80x80



MARBLE TILE
GP60NO 60x60 80x80



MARBLE TILE
MY8P216-G 60x60 80x80

6



MARBLE TILE
MY80301-1 60x60 80x80



MARBLE TILE
MY8P070 60x60 80x80



MARBLE TILE
MY8P351-1 60x60 80x80

MARBLE



MARBLE TILE
MY8P305-3 60x60 80x80



MARBLE TILE
MY8P401-1 60x60 80x80



MARBLE TILE
MY8P311-1 60x60 80x80



SANDSTONE



SANDSTONE Black Polished
FG66003 60x60 80x80



SANDSTONE Black Matt
FG66003M 60x60 80x80



SANDSTONE Brown Polished
FG66005 60x60 80x80



SANDSTONE Deep Yellow
FG66008 60x60 80x80



SANDSTONE White Polished
FG66009 60x60 80x80

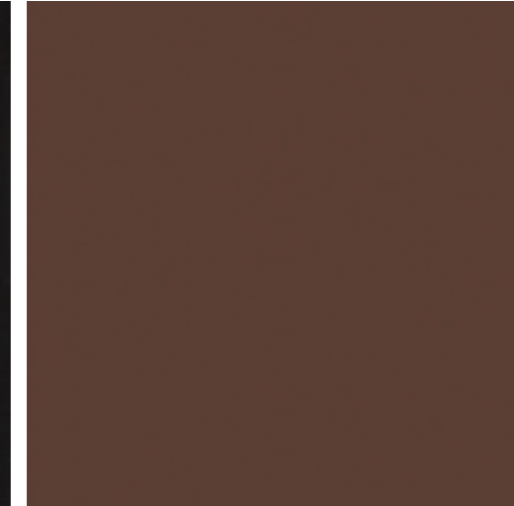


PURE COLOR

PURE COLOR Black Polished
HP6603 60x60 80x80



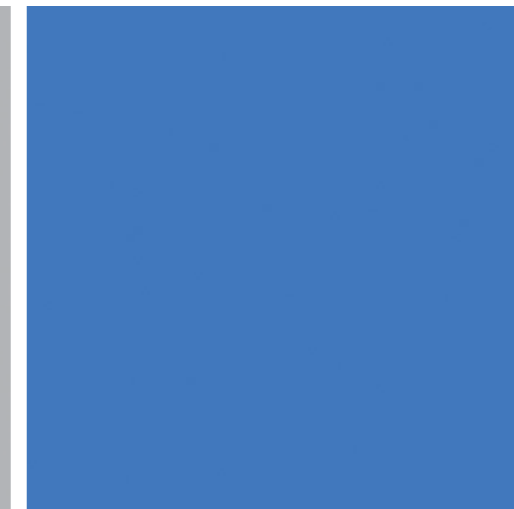
PURE COLOR Brown Polished
HP6100 60x60



PURE COLOR LIGHT GREY POLISHED
HP6101 60x60 80x80



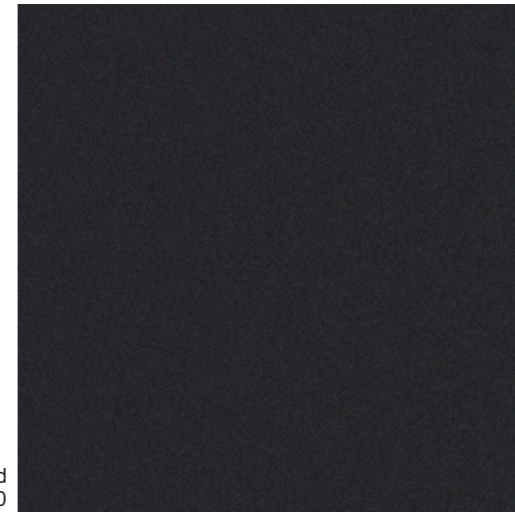
PURE COLOR Blue Polished
LV-HP6109 60x60





PURE COLOR

PURE COLOR Black Semi Polished
HP6603P 60x60



PURE COLOR Black Matt
HP6603M 60x60



PURE COLOR Black Rustic
HJN16001 60x60



PURE COLOR White Rustic
HP2300JM 60x60

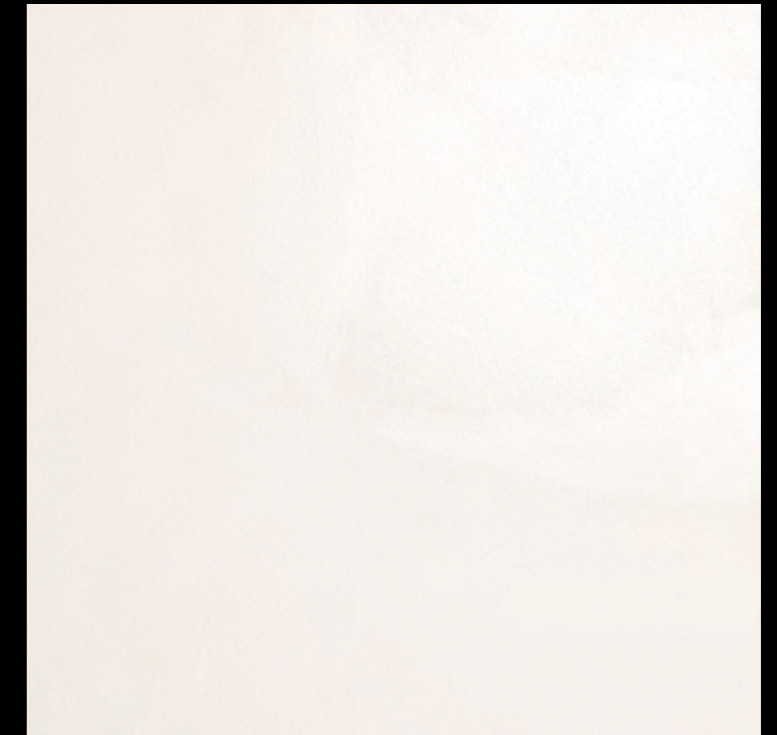




PURE COLOR



PURE COLOR Super White Matt
HP 62300M 60x60



PURE COLOR White Semi Polished
HP62300P 60x60

SNOW WHITE



SNOW WHITE Polished
HQ6111 60x60



SNOW WHITE Polished
HQ6023 60x60



CREMA MARFIL



CREMA MARFIL Dark Beige
HC601 60x60



CREMA MARFIL Light Beige
HC606 60x60



TRAVERTINO



TRAVERTINO
HT6101 60x60 80x80



TRAVERTINO
HT6100 60x60 80x80



DOUBLE LOADING / CAPRI



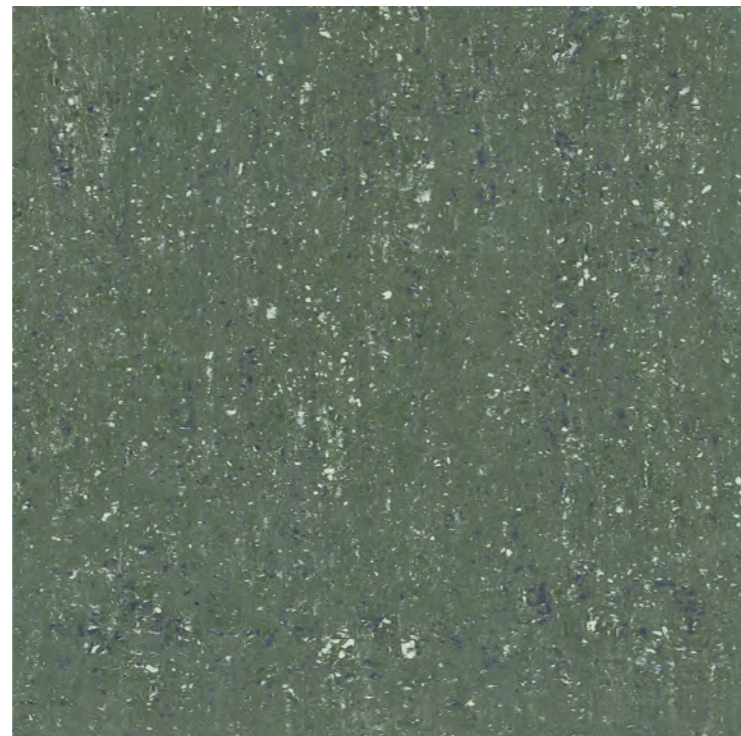
CAPRI Brown
HW6401Y 60x60



DOUBLE LOADING / GAIA



GAIA Dark grey
HF63EOY 60x60



GAIA Green
HF6802Y 60x60





DOUBLE LOADING / GAIA

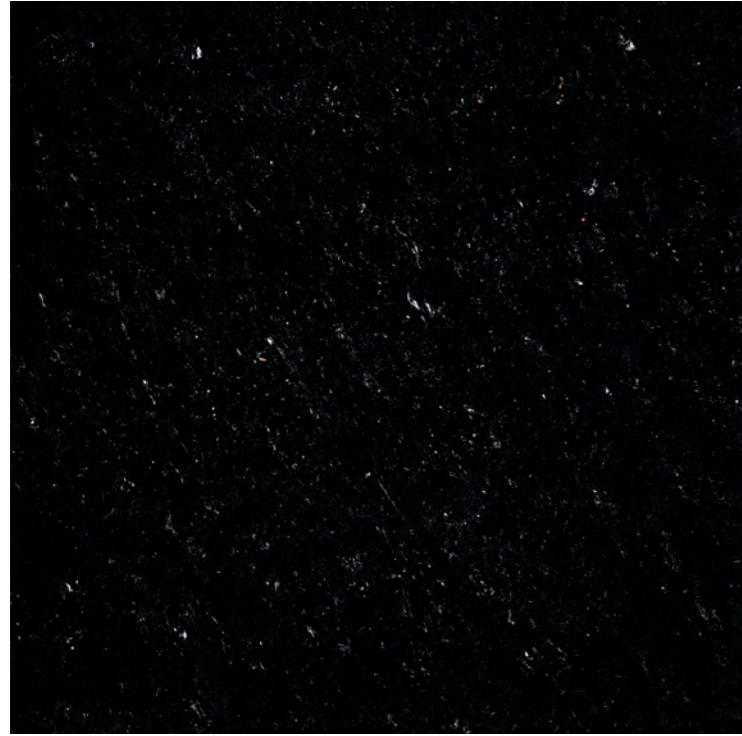


GAIA Brown
HF6320Y 60x60



GAIA Light grey
HF6109Y 60x60

CRYSTAL LOADING/ **NYX**



NYX Black
HA6301 60x60 80x80



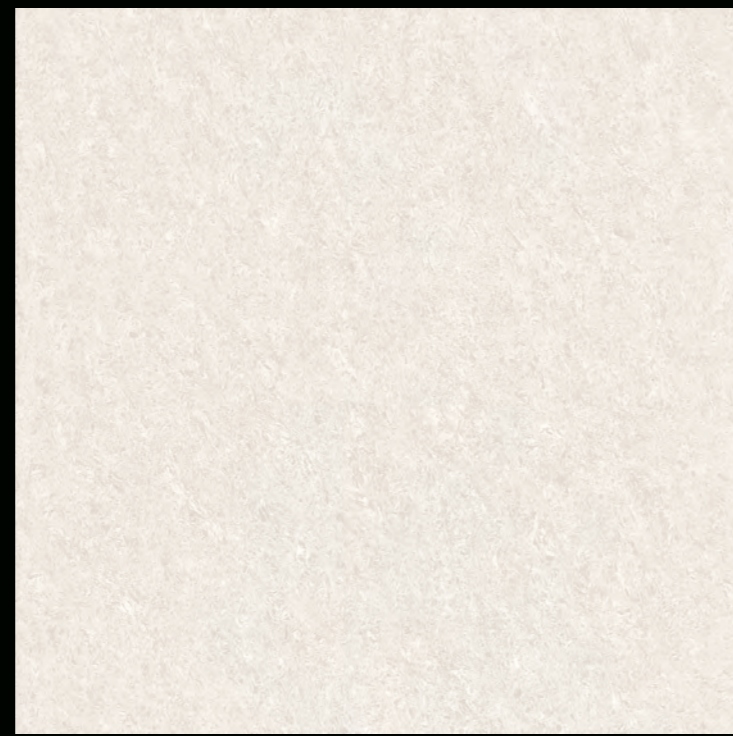
NYX Pink
HA6106 60x60 80x80



CRYSTAL LOADING/NYX



NYX Light beige
HA6102 60x60 80x80 60x120



NYX White
HA6105 60x60 80x80 60x120



NAVOLA / THALASSA



THALASSA Beige
NF60AS 60x60 80x80 60x120



THALASSA White
NF65OE 60x60 80x80 60x120



THALASSA Sand
NF60AF 60x60 80x80 60x120





PLATI/CHRONOS

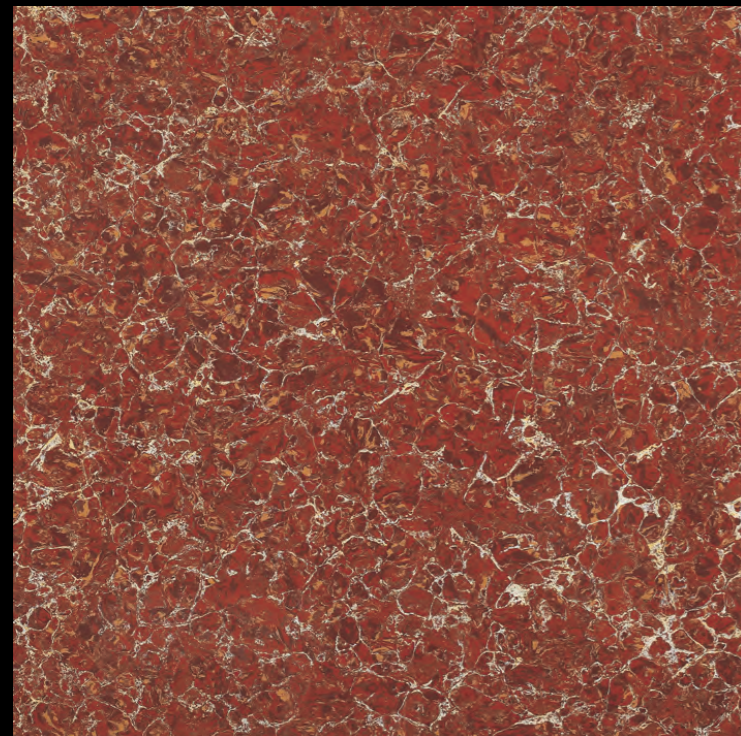


CHRONOS White
BL600 60x60 80x80



CHRONOS Light yellow
BL607 60x60 80x80

PLATI/CHRONOS



CHRONOS Red
BL618 60x60 80x80



CHRONOS Pink
BL6B15 60x60 80x80



CHRONOS Light beige
BL009 60x60 80x80

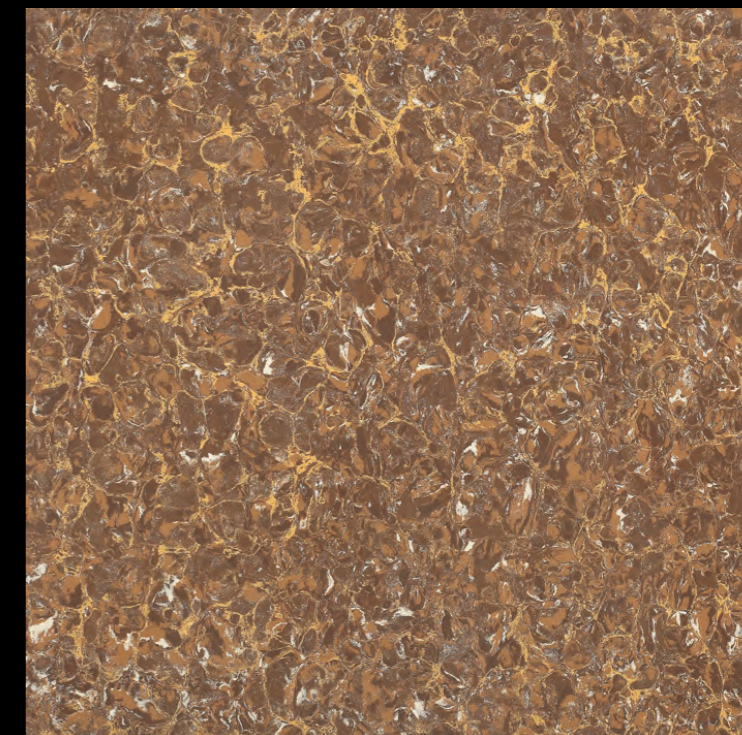




PLATI/CHRONOS



CHRONOS Yellow
BL007 60x60 80x80



CHRONOS Dark brown
BL6B019 60x60 80x80

VERTICAL LOADING / HERA



HERA Beige
NG6002 60x60 80x80 60x120



HERA White
NG6001 60x60 80x80 60x120





VERTICAL LOADING / HERA



HERA Pink
NG6003 60x60 80x80 60x120



HERA Light Grey
NG6004 60x60 80x80 60x120

Double loading / PINTO



PINTO Light Yellow
LPD6004 60x60 80x80



PINTO Pink
LPD6003 60x60 80x80



PINTO White
LPD6001 60x60 80x80



DOUBLE LOADING / NEREID



NEREID Pink
LPJ8803 80x80



NEREID Beige
LPJ8802 80x80



NEREID White
LPJ8801 80x80

SOLUBLE SALT / SOLARIS



SOLIS
HE601 60x60



MERCURY
HE602 60x60



SOLUBLE SALT / SOLARIS



URANUS
HE6019 60x60



JUPITER
HE606 60x60



EARTH
HE604 60x60





SATURN
HE607 60x60



PLUTO
HE6607 60x60



LUZON
HE6628 60x60



TASMANIA
HE6223 60x60



NEPTUNE
HE6028 60x60

SOLUBLE SALT/SOLARIS

SANDSTONE



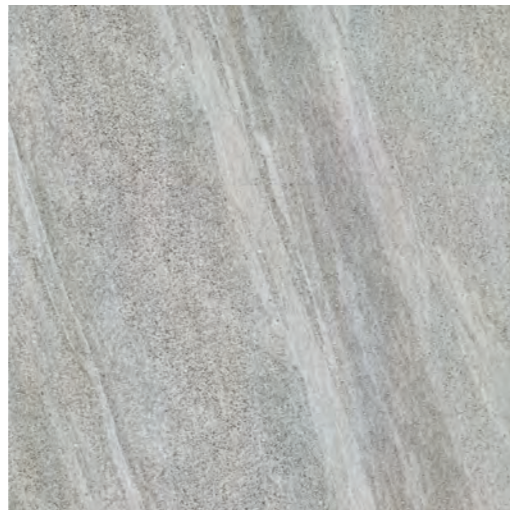
SANDSTONE
GL6003 60x60



SANDSTONE
GL6004 60x60



SANDSTONE
GL6005 60x60



SANDSTONE
GL6006 60x60





57

CEMENT



CEMENT
GL6201 60x60



CEMENT
GL6202 60x60



CEMENT
GL6203 60x60

58



PATTERN



PATTERN
GL6409 60x60



PATTERN
GL6410 60x60

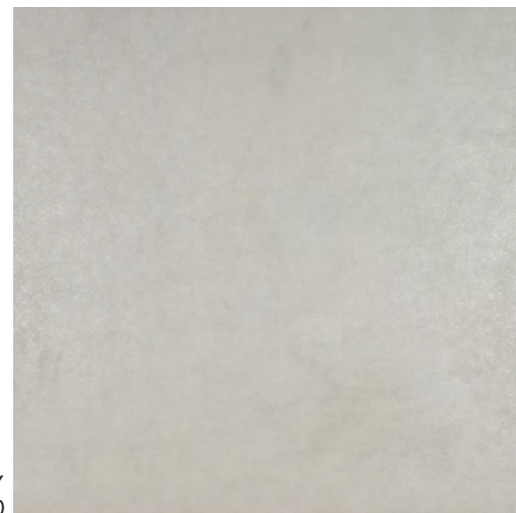


PATTERN
GL6411 60x60

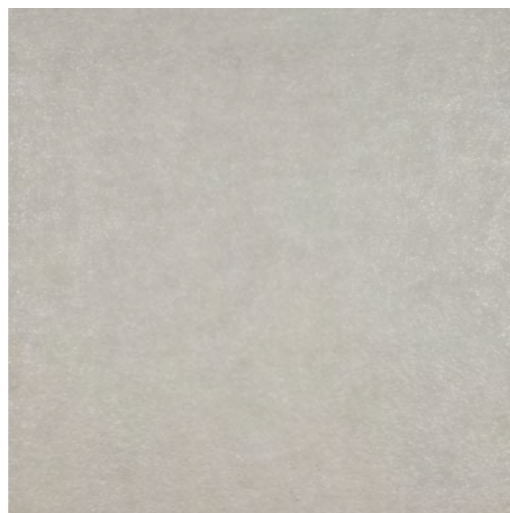
MERCURY

61

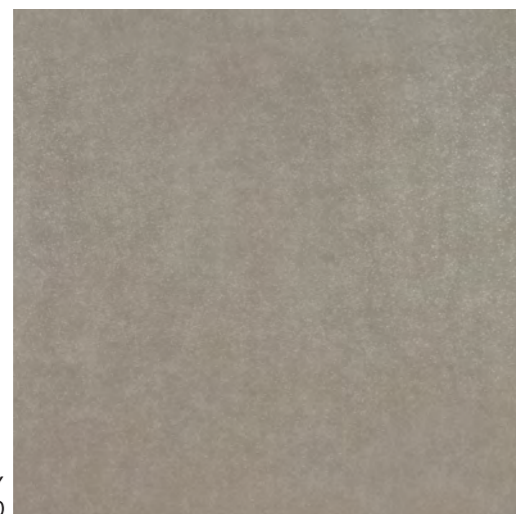
MERCURY
ME6001M 60x60



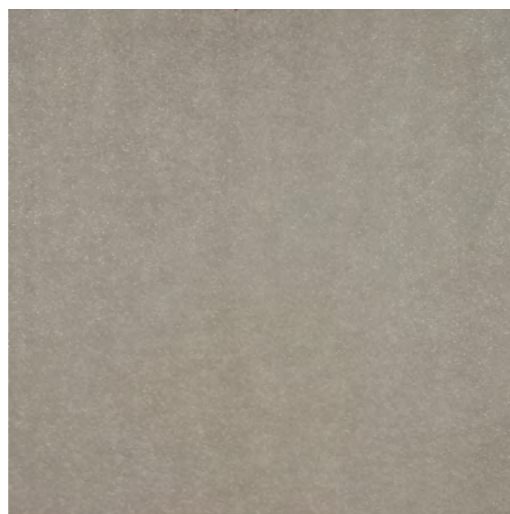
MERCURY
ME6001R 60x60



MERCURY
ME6002M 60x60



MERCURY
ME6002R 60x60



62



MERCURY



MERCURY
ME6003M 60x60



MERCURY
ME6003R 60x60

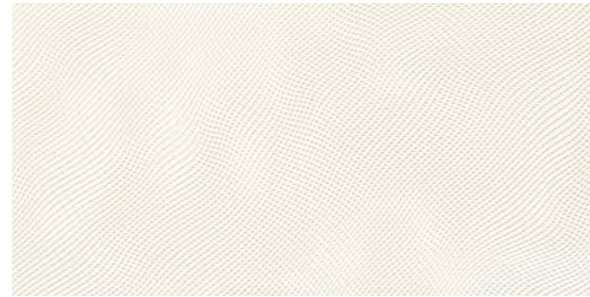


MERCURY
ME6004M 60x60



MERCURY
ME6004R 60x60

CLASSIC



WALL TILE
OY6377 30x60



WALL TILE
OY6378 30x60



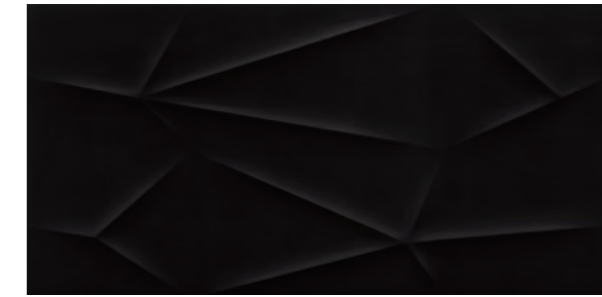
WALL TILE
OY6379 30x60



WALL TILE
OY6380 30x60



WALL TILE
OY6381 30x60



WALL TILE
OY6382 30x60



WALL TILE
OY6383 30x60



WALL TILE
OY6384 30x60

Size cm	Box		Pallet			
	m ² /box	pcs/box	kg/box	m ² /pallet	box/pallet	kg/pallet
■ 30x60	1.44	8	29.5	57.6	40	1180

CERAMIC WALL TILE



3544 30x30



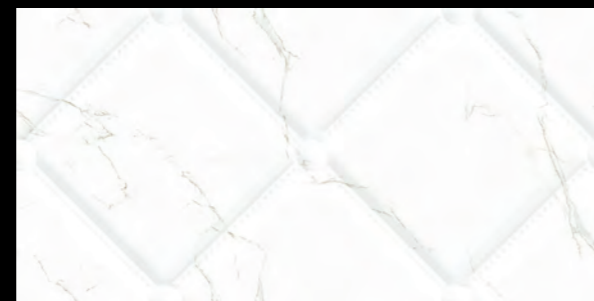
7554HKZ 8x30



7554 30x60



7567HK2 3x30



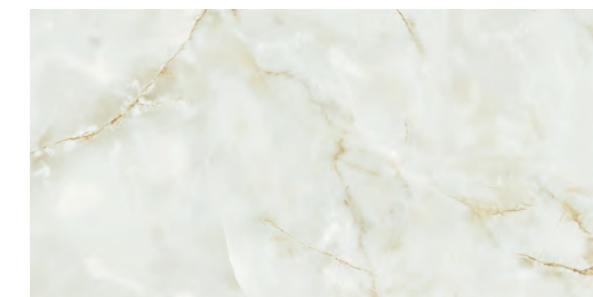
7567 30x60



7568 30x60



LV-6359VA 13x30



LV-6359 30x60

CERAMIC WALL TILE



6371VB 7x60



6371WP 30x30



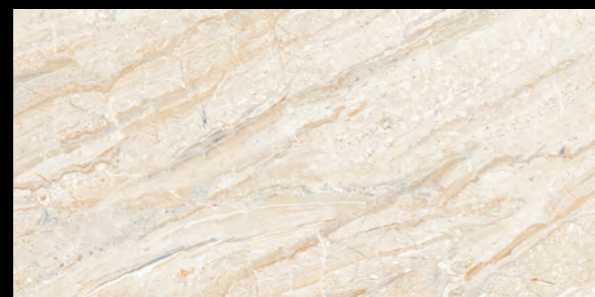
6371 30x60



W7038 30x60



LBG36A12 30x60



W7037 30x60



LBG36A13 30x60



WHITE COLLECTION



DECORATION



DECORATION TILE
TY36141 30x60



DECORATION TILE
TY36143 30x60



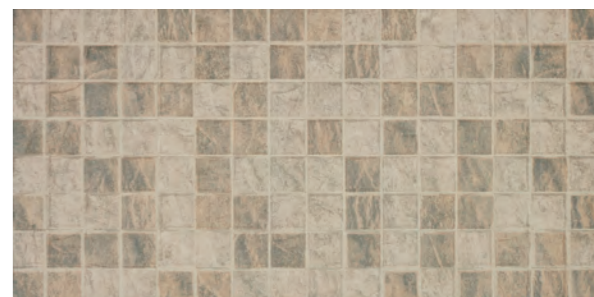
DECORATION TILE
TY36145 30x60



DECORATION TILE
TY36133 30x60



DECORATION TILE
TY36132 30x60



DECORATION TILE
Ty36134 30x60 80x80



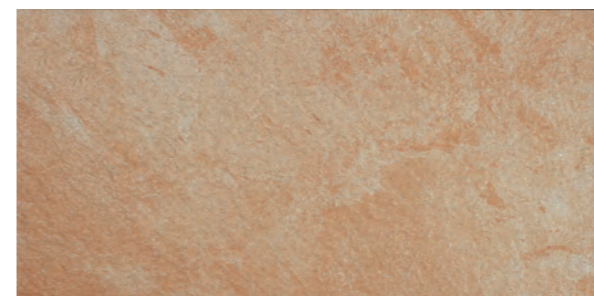
DECORATION TILE
TY36139 30x60



DECORATION TILE
TY36234 30x60



DECORATION TILE
TY36235 30x60



DECORATION TILE
TY36233 30x60



DECORATION TILE
TY36147 30x60

















DECORATION TILE
TY36146 30x60

Size cm	Box			Pallet		
	m ² /box	pcs/box	kg/box	m ² /pallet	box/pallet	kg/pallet
■ 30x60	1.44	8	29.5	57.6	40	1180

Packing Details

Size	Box			Pallet			21.5 Tons container			26.5 Tons container			Pallet	
	cm	m ² /box	pcs/box	kg/box	m ² /pallet	box/pallet	kg/pallet	m ² /cntr	box/cntr	pal/cntr	m ² /cntr	box/cntr	pal/cntr	box/pal
□ 30X30	0.99	11	21	65.34	66	1386	1012.77	1023	16	1248.39	1261	19	66	1.1x1.1
□ 30X60	1.44	8	33	57.6	40	1320	936	1023	16	1152	800	20	40	1.1x1.1
□ 60X60	1.44	4	33	57.6	40	1320	936	650	16	1152	800	20	40	1.1x1.1
□ 80X80	1.92	3	51	53.76	28	1428	806.4	420	15	998.4	520	19	28	1.1x1.1
□ 60X120	1.44	2	45	69.12	48	2160	69.12	48	2160	846.72	588	17	48	1.1x1.1
□ 100X100	2	2	57	64	32	1824	64	32	1824	930	465	15	32	1.1x1.1

TECHNICAL STANDARD

		Product Standards	Standard Request	European Standard	Louis Valentino Exquisite Stone
	Water absorption	GB/T4100-1-1999	≤0.5%	≤0.5%	≤0.08%
	Breaking strength Rupture modulus	GB/T4100-1-1999	≥1300N ≥35MPa	≥27MPa	≥1800N ≥40MPa
	Length	GB/T4100-1-1999	±1.0mm	±0.6%	±0.5mm
	Width	GB/T4100-1-1999	±1.0mm	±0.6%	±0.1%
	Thickness	GB/T4100-1-1999	±5.0mm	±5%	±4%
	Surface smoothness	GB/T4100-1-1999	±0.2%	±0.5%	±0.15%
	Edge straightness	GB/T4100-1-1999	±0.2%	±0.5%	±0.15%
	Squareness	GB/T4100-1-1999	±0.2%	±0.6%	±0.15%
	Wearing strength	GB/T4100-1-1999	≤175mm ³	<205 mm ³	±0.15%
	Linear thermal expansion coefficient	GB/T4100-1-1999		<9*10 ⁻⁶ K ⁻¹	≤160 mm ³
	Thermal vibratility	GB/T4100-1-1999	No crack and crack after rapid cooling and rapid heating cycle for 10times	Approve	
	Frost resisting property	GB/T4100-1-1999	No crack or spalling after frost resistance test		No crack or spalling after frost resistance test, the test is passed
	Glossiness Polished porcelain	GB/T4100-1-1999	≥55		≥65
	Radioactivity	GB/6566-2001, A Category	1Ra≤1 Ir≤1.3		1Ra≤0.6 Ir≤1.2

INSTALLATION INSTRUCTIONS



1. Choosing the proper tools and implements (notched trowel, rubber mallet, suction-cups and cross-spacers for installing tiles, rubber trowel for grouting) is of the utmost importance.



2. The substrate (wall or floor) to be tiled must be perfectly level, with no defects in planarity. We recommend that damp areas be waterproofed beforehand. A difference in thickness in the adhesive layer will produce different stresses on the ceramic tile surface which will result in projecting tile edges.



3. The surface to be tiled must be completely free of dust or any other substance that could negatively affect the adhesion. This will promote better bonding strength of the adhesive on the substrate.



4. During installation, there should be enough light to allow us to easily spot any sort of defect, especially the appearance of projecting the tile edges. During this phase, work should be performed with more lighting than that which will illuminate the area once the work is finished. The use of spotlights will prove helpful in this regard.



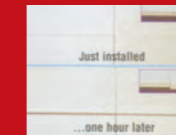
5. Selecting the type of adhesive to use is fundamental. We must take into account the properties of the substrate to be tiled (surface of brick, wood, plaster, metal, etc.), as well as the characteristics of the chosen ceramic tiles (porous wall tiles, stoneware tiles or porcelain tiles).



6. The thin-bed installation method is recommended with a flexible adhesive. For formats larger than 31,6*31,6 (1.000 cm²) the buttering-floating technique is recommended, that consists of applying the adhesive on both the substrate and the back of the tile.



7. Being as these are rectified tiles, they require careful handling, to avoid nipped edges, chipping or scratches on the surface of tiles. The Ceramic Tile Guide recommends that tiles not be installed with a joint width less than 1.5mm. between pieces.



9. During installation stoppages, it should be kept in mind that the tiles already installed have contracted, and those which we are going to install will experience the same movement. Therefore, it is necessary to predict the possible movement, since if we continue tiling on the same level, the subsequent contraction may give rise to a slight difference in level.



11. If the substrate already has its own structural joints or dividing joints, these should be respected when ceramic tiles are installed. It must be remembered that the maximum surface area to be covered with ceramic tiles without dividing joints is 50 m² to 70 m² for interiors and half that size for exteriors.

8. For the installation of rectified materials, it is recommended that cross-spacers of at least 1mm. be used. In rustic models the minimum joint recommended is 3 mm. It is recommended that rectangular tiles, when arranged in a staggered layout, be installed at 3/4th-piece intervals.

10. It is recommended that you consider the inclusion of perimeter joints, which will help to absorb any movements after installation. These joints must be left empty, or else filled with a compressible material; the minimum recommended width for those joints is 8 mm. This joint is concealed with the skirting or with the tile itself.

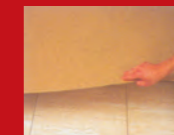
12. During the installation phase, before setting has fully taken place, we should continuously check already installed pieces, since there is still time to fix any faults. A rubber mallet can be used to tap down projecting tiles and a suction-cup can be used to pull up pieces that are sunken in excess.



13. Before grouting, it should be made sure that installation joints (between tile and tile) are empty and free of bonding materials and traces of dirt and grime. Any intermediary substance may make installation joints less effective, in addition to hindering the adhesion of the grout.



15. The grouting material should be applied with a rubber trowel, and the use of metallic trowels should be avoided at all times, since they may damage the glazed surface of tiles. Grouts in a wide range of colours are available on the market, which make it possible to match the shade of any setting created.



14. Joints should be grouted once tiles are firmly bonded to the substrate. In the special case of floor tiles, the manufacturer's recommendations should be followed, so as to enable enough time to elapse before tiles are walked on or subjected to any loads.

16. Removing excess grouting material should be performed using a sponge dampened in water. This operation should be done in timely fashion, since if the grouting material is left in contact with the glazed surface of tiles for too long, it hinders cleaning, especially in those models the surface of which has relief.

17. It is absolutely necessary that already installed ceramic floor tiles be protected with the proper means so as to prevent possible damages until the building project is complete, due to the presence of abrasive materials and ongoing movement of tools. This will not only help to protect tiles, but it will also make subsequent cleaning easier.

18. The use of cleaning agents that contain hydrofluoric acid (HF) and solid detergents with particles that may abrade the tile surface should be avoided. Hydrofluoric acid would completely remove the glazed surface of tiles, thus causing irreparable damage.